



FOR LEASE | OFFICE SPACE

Water Gardens | 100 East 15th Street, | Fort Worth, Texas



\$22.00/RSF. + ELEC

LEASE RATE

Building Size: 91,209 SF.

Building Information

- On-Site Security
- Covered & Surface Parking Available
- Walking distance to Omni, Sheraton & the Convention Center
- Overlooks The Water Gardens
- Lunchline to Sundance Square
- Quick access to I-35, I-30 & Chisholm Trail Parkway
- Historic Landmark Building

Available Space

- 664 RSF. - Suite 115
- 2,312 RSF. - Suite 350
- 1,371 RSF. - Suite 360
- 1,204 RSF. - Suite 401
- 2,240 RSF. - Suite 415
- 4,202 RSF. - Suite 500
- 996 RSF. - Suite 615
- 3,223 RSF. - Suite 630
- 2,640 RSF. - Suite 640
- 1,616 RSF. - Suite 650

PROPERTY CONTACT

JACK A. CLARK	817.336.4002	JCLARK@ROREALTY.COM
STEPHANIE GWIZDZ	817.336.4007	SGWIZDZ@ROREALTY.COM
MAIN OFFICE	817.877.3300	ROREALTY.COM
FAX	817.877.3310	

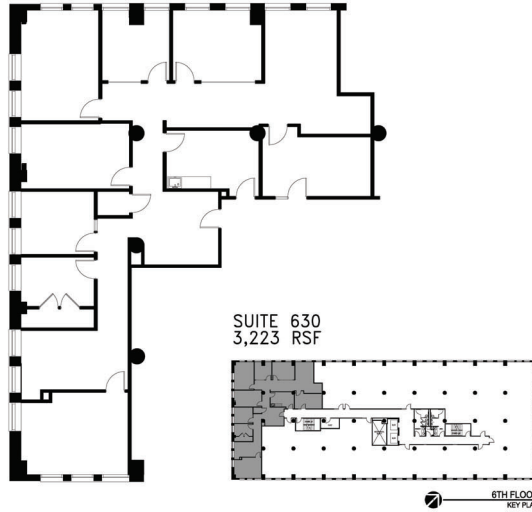
The information contained in this card is deemed to be reliable. Every effort was made to obtain accurate and complete information; however no representation, warranty or guarantee, expressed or implied, may be made as to the accuracy or reliability of the information contained herein.



FOR LEASE | OFFICE SPACE

Water Gardens | 100 East 15th Street, | Fort Worth, Texas

SUITE 630 | 3,223 RSF

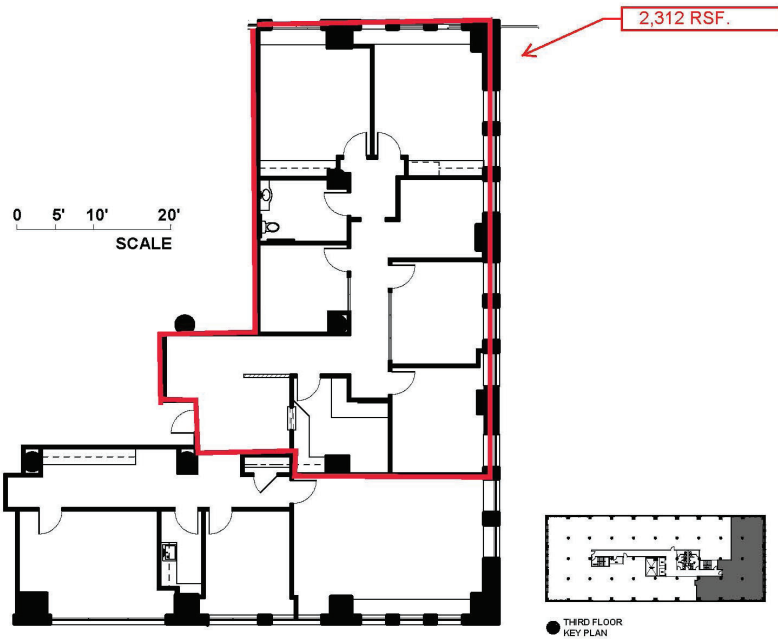


WATER GARDENS PLACE

MARKETING PLAN SUITE 630
DATE: 11-02-22 | RSF: 3,223

INTERPRISE

SUITE 350 | 2,312 RSF.



PROPERTY CONTACT

JACK A. CLARK	817.336.4002	JCLARK@ROREALTY.COM
STEPHANIE GWIZDZ	817.336.4007	SGWIZDZ@ROREALTY.COM
MAIN OFFICE	817.877.3300	ROREALTY.COM
FAX	817.877.3310	

The information contained in this card is deemed to be reliable. Every effort was made to obtain accurate and complete information; however no representation, warranty or guarantee, expressed or implied, may be made as to the accuracy or reliability of the information contained herein.