



FOR LEASE | OFFICE SPACE

Cantey Hanger Plaza | 600 West 6th Street, | Fort Worth, Texas



LEASE RATE

\$28.00 RSF + ELEC

Building Size: 84,493 SF.

Building Information

- Ground Floor Availability
- Shell Space on the 2nd Floor
- On-site Security
- Protected Parking Garage
- Walking distance to Sundance Square
- Across the street from Burnett Park
- Quick Access to I-30 & Chisholm Trail Tollway

Available Space

- SUITE 175 - 4,197 RSF.
- SUITE 225 - 5,427 RSF. - Shell Space



PROPERTY CONTACT

JACK A. CLARK	817.336.4002	JCLARK@ROREALTY.COM
STEPHANIE GWIZDZ	817.336.4007	SGWIZDZ@ROREALTY.COM
MAIN OFFICE	817.877.3300	ROREALTY.COM
FAX	817.877.3310	

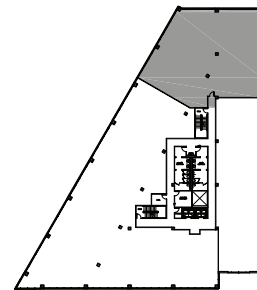
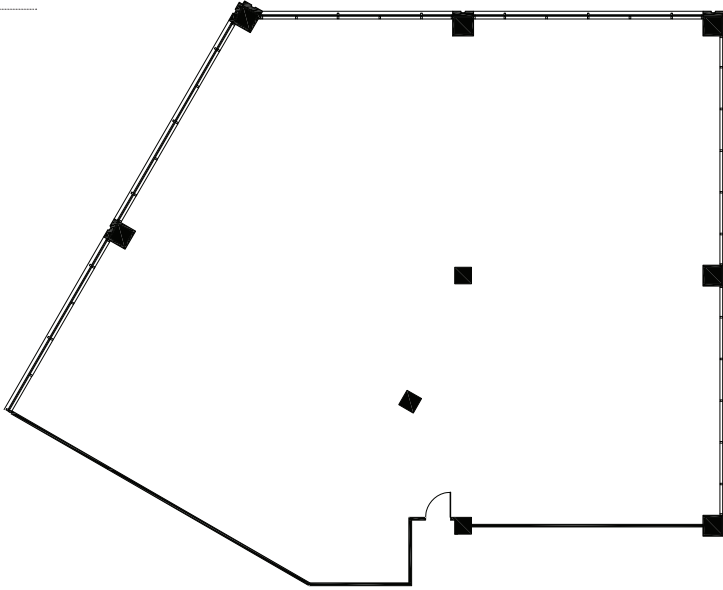
The information contained in this property flyer is deemed to be reliable. Every effort was made to obtain accurate and complete information; however no representation, warranty or guarantee, expressed or implied, may be made as to the accuracy or reliability of the information contained herein.



FOR LEASE | OFFICE SPACE

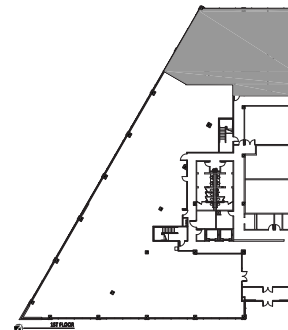
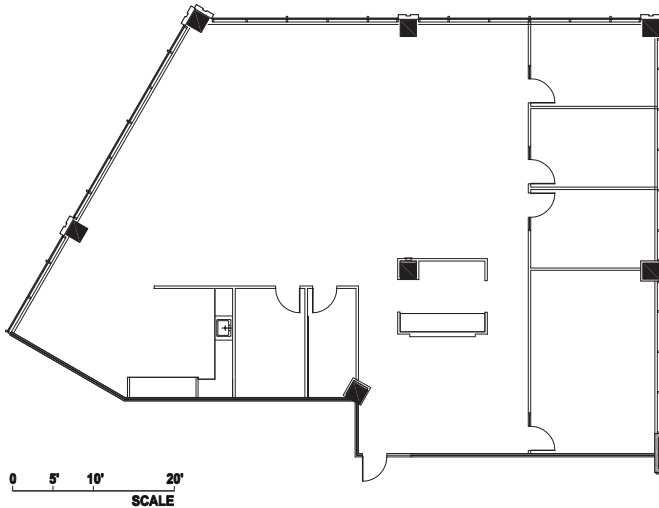
Cantey Hanger Plaza | 600 West 6th Street, | Fort Worth, Texas

SUITE 225 - 5,427 RSF.



2ND FLOOR

SUITE 175 - 4,197 RSF.



PROPERTY CONTACT

JACK A. CLARK	817.336.4002	JCLARK@ROREALTY.COM
STEPHANIE GWIZDZ	817.336.4007	SGWIZDZ@ROREALTY.COM
MAIN OFFICE	817.877.3300	ROREALTY.COM
FAX	817.877.3310	